












### Legend :

-  Angrignon Metro Station  
Green Line terminus
-  Paid parking (700 spaces) – \$15/24h  
Located right next to the campsite  
→ GoogleMaps : «3500bdTrinitairesParking»
-  1-minute walk from the metro station and parking to the campsite
-  “Guide” volunteers location along the path  
→ Present from 8:15 to 10:30 AM
-  Campsite 🌟  
→ Meeting point at 8:30 AM
-  Walk start arch  
Meeting point at 11:00 AM
-  Car entrance via « Bd des Trinitaires »
-  Angrignon Station – buses 37, 61, 78, 106, 110, 113, 114
-  Free parking – located farther from the campsite

Legend:

2 km out-and-back route, entirely on paved path

3 km loop route, on paved and dirt paths

Start arch and departure point for both routes

Finish – out-and-back route

Finish – loop route

Aire de jeu 18 mois à 5 ans

Arche et Départ des deux parcours

Arrivée du métro Angrignon

Parking 700 places (payant)

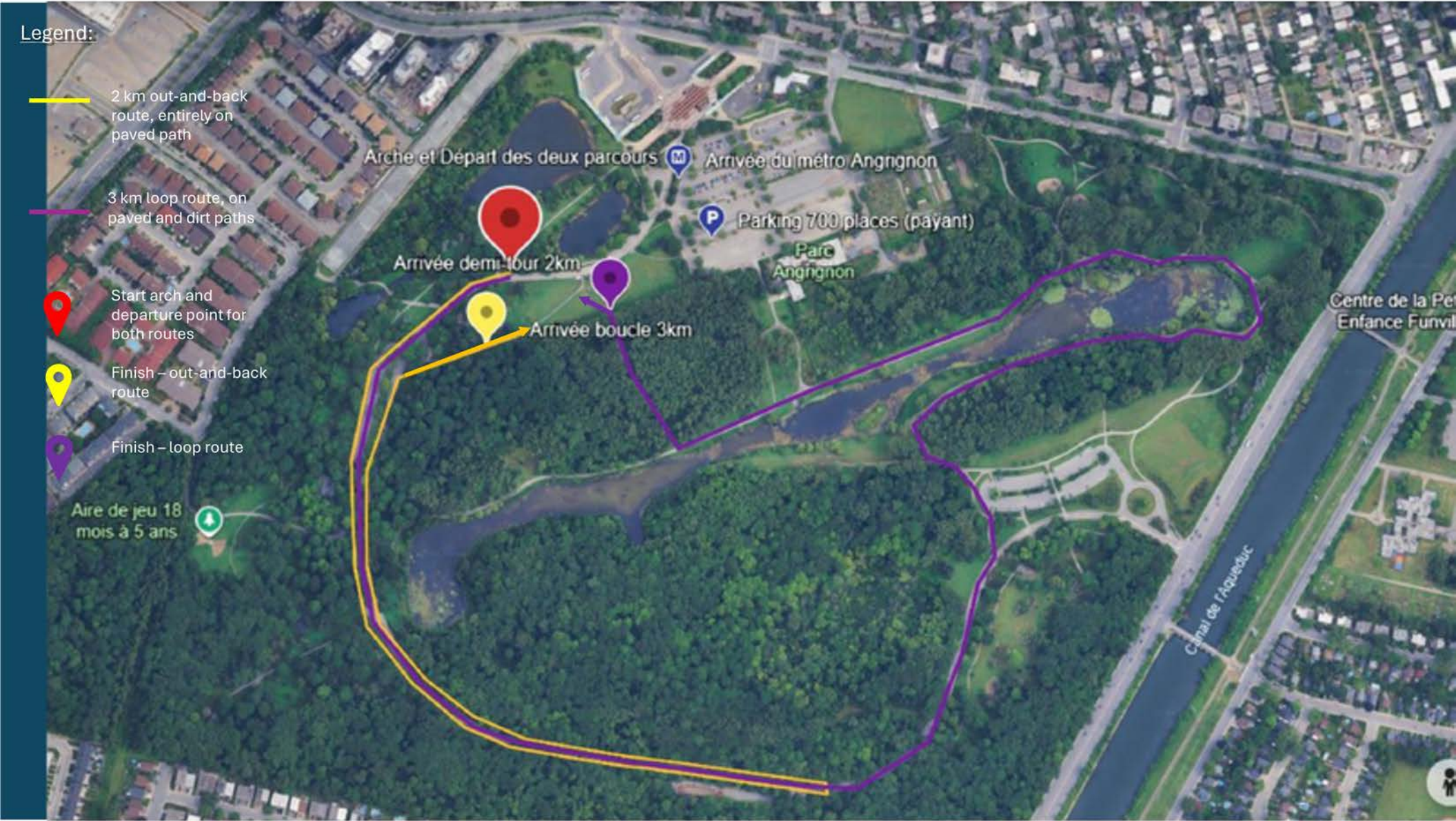
Parc Angrignon

Arrivée demi-tour 2km

Arrivée boucle 3km

Centre de la Petite Enfance Furville

Canal de l'Acadie



# WALKERS' CAMPSITE MAP 2026

## WALKERS' CAMPSITE MAP

